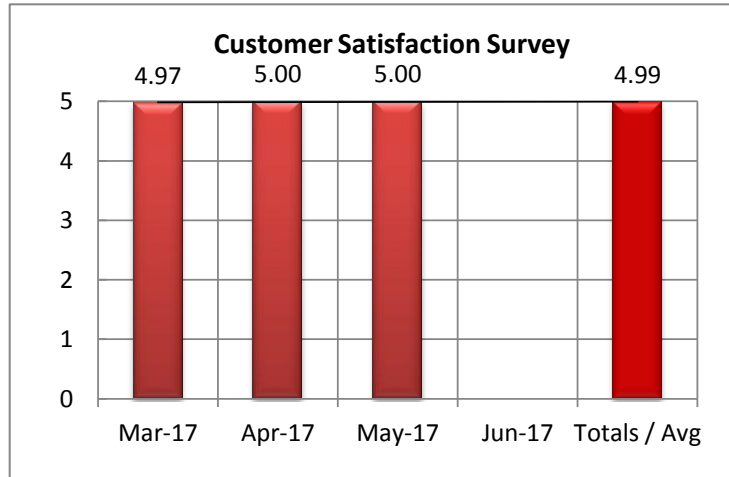
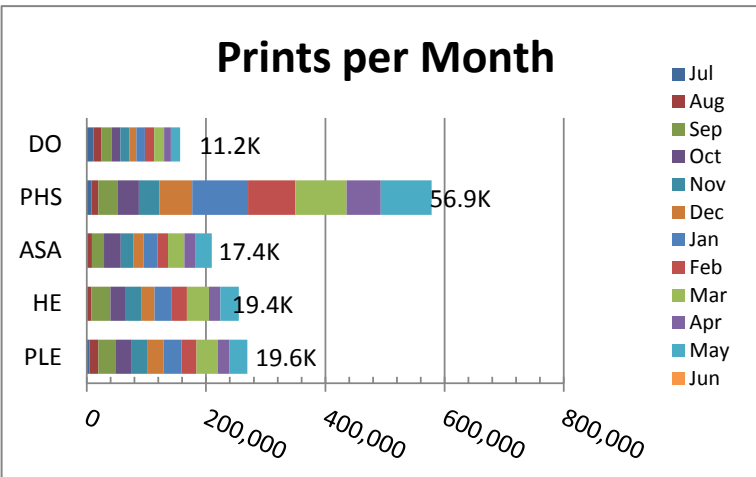
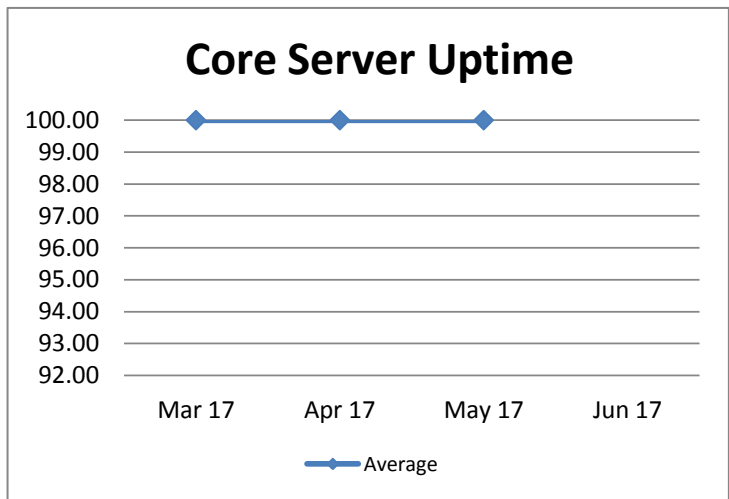
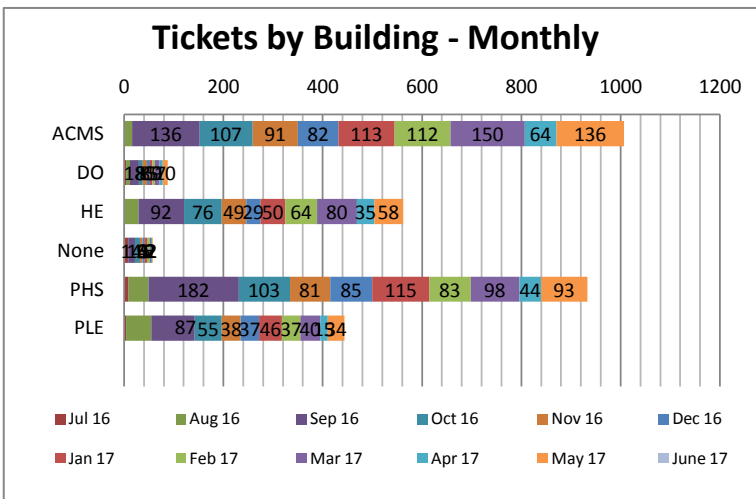
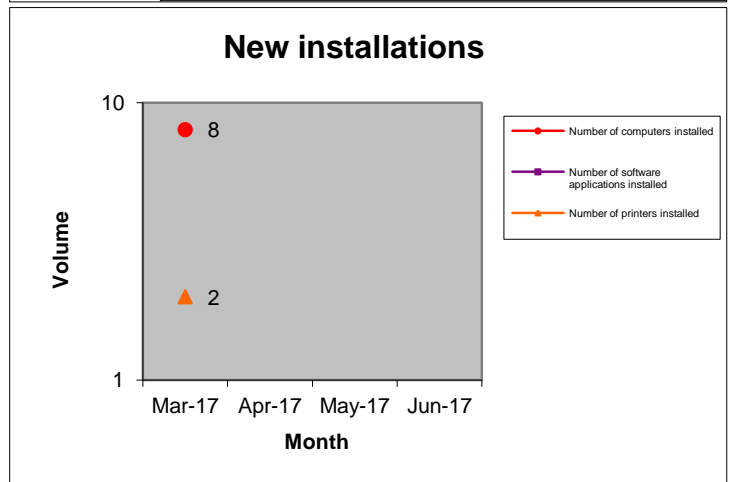
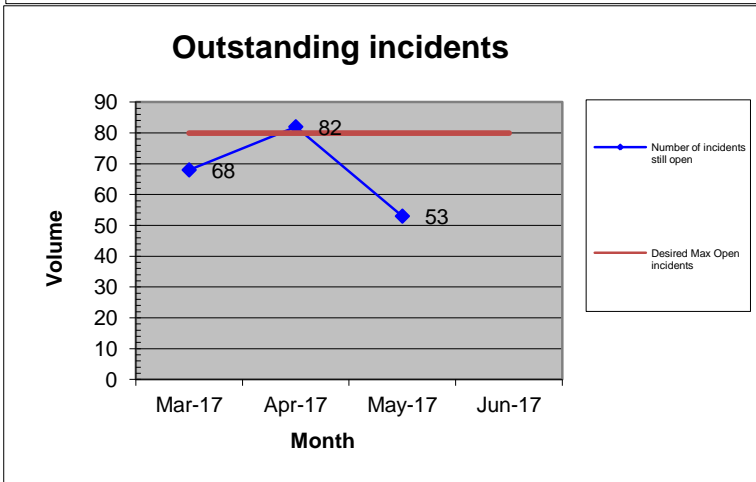
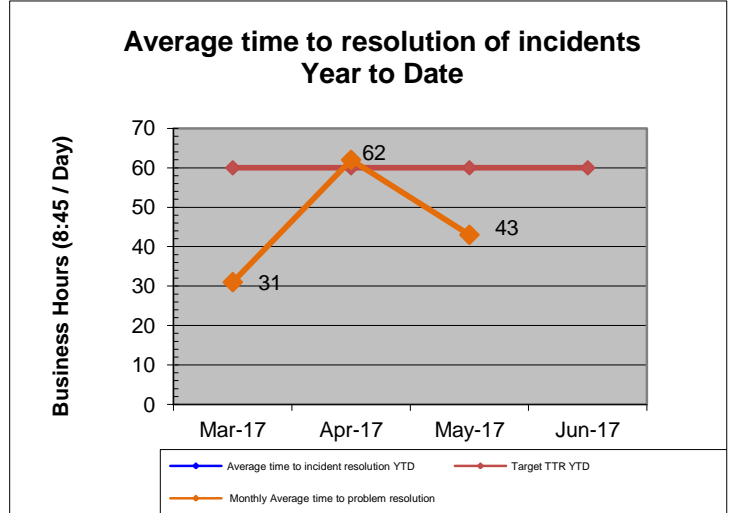
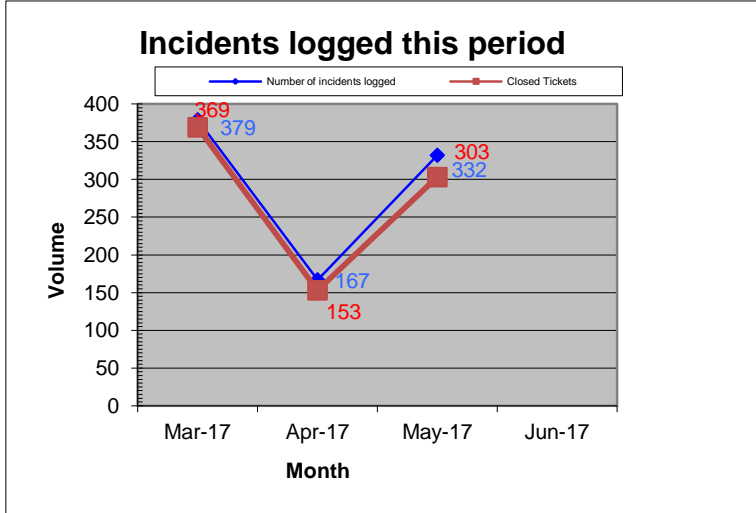


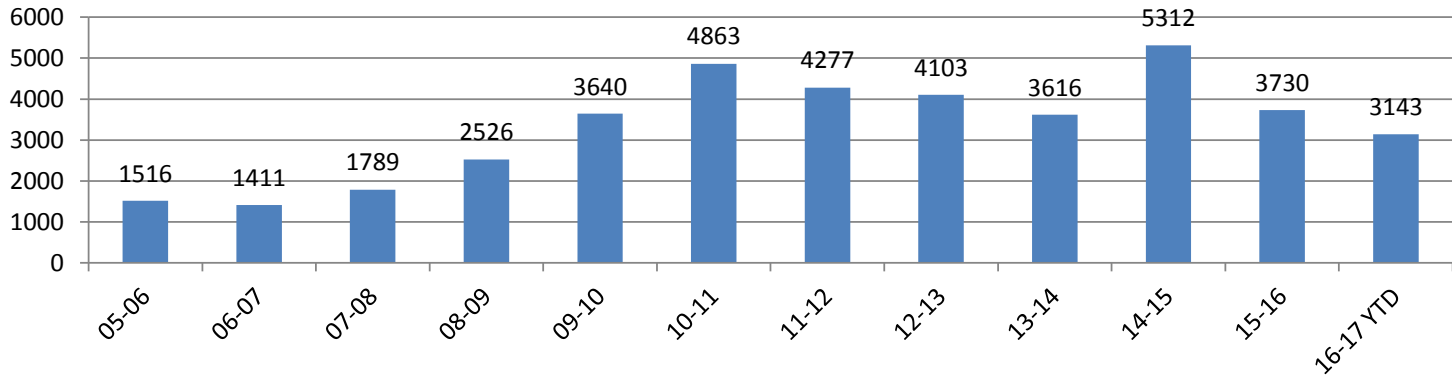
PSD IT Service Level Dashboard

Report period: Mar-17 to Jun-17

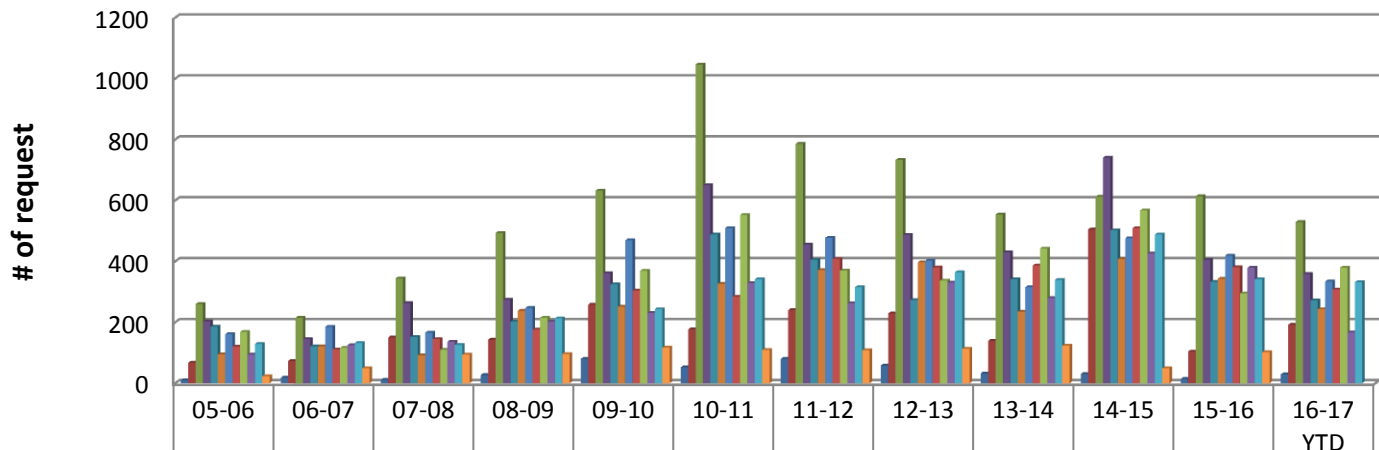


PSD IT Service Level Dashboard

IT Tickets per Year

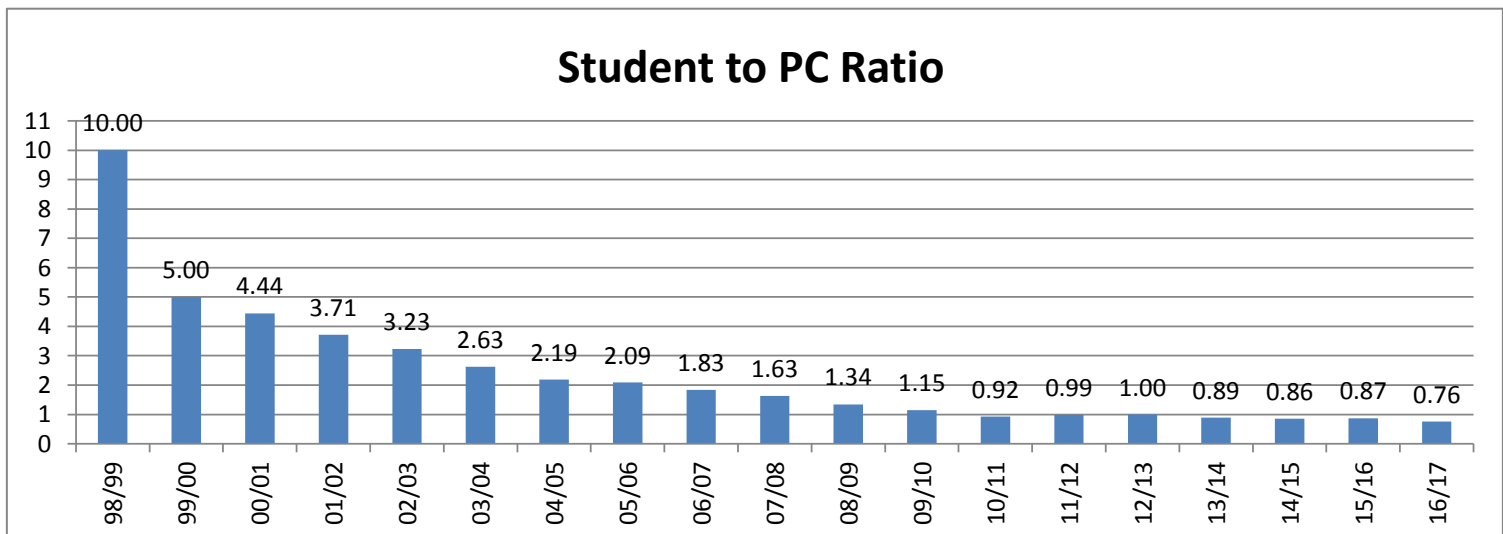
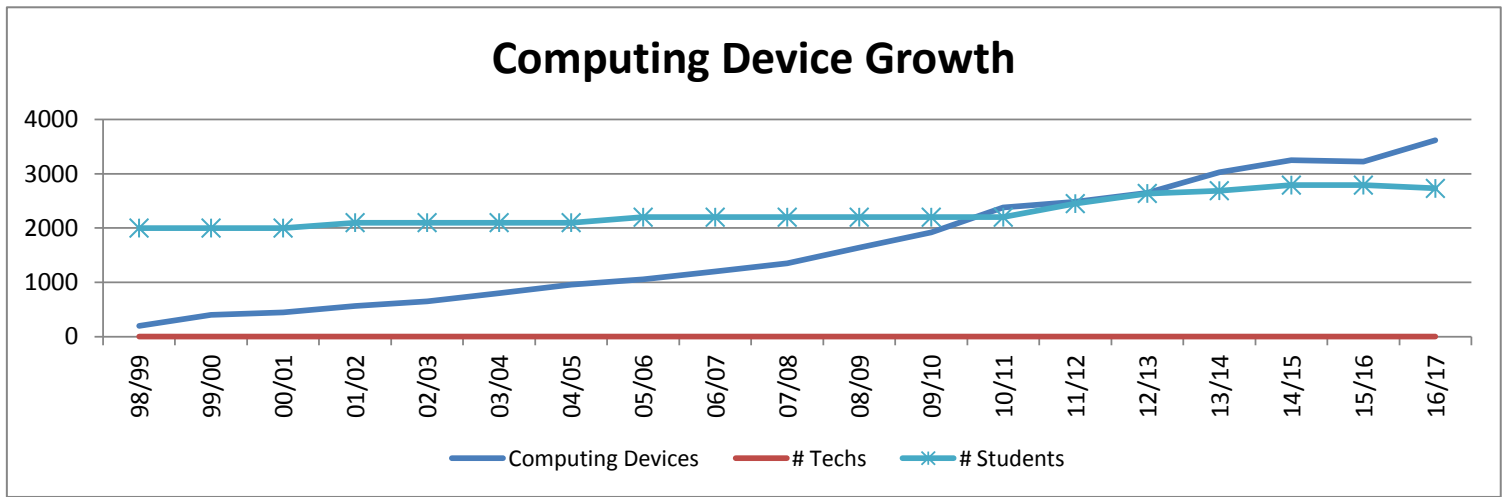
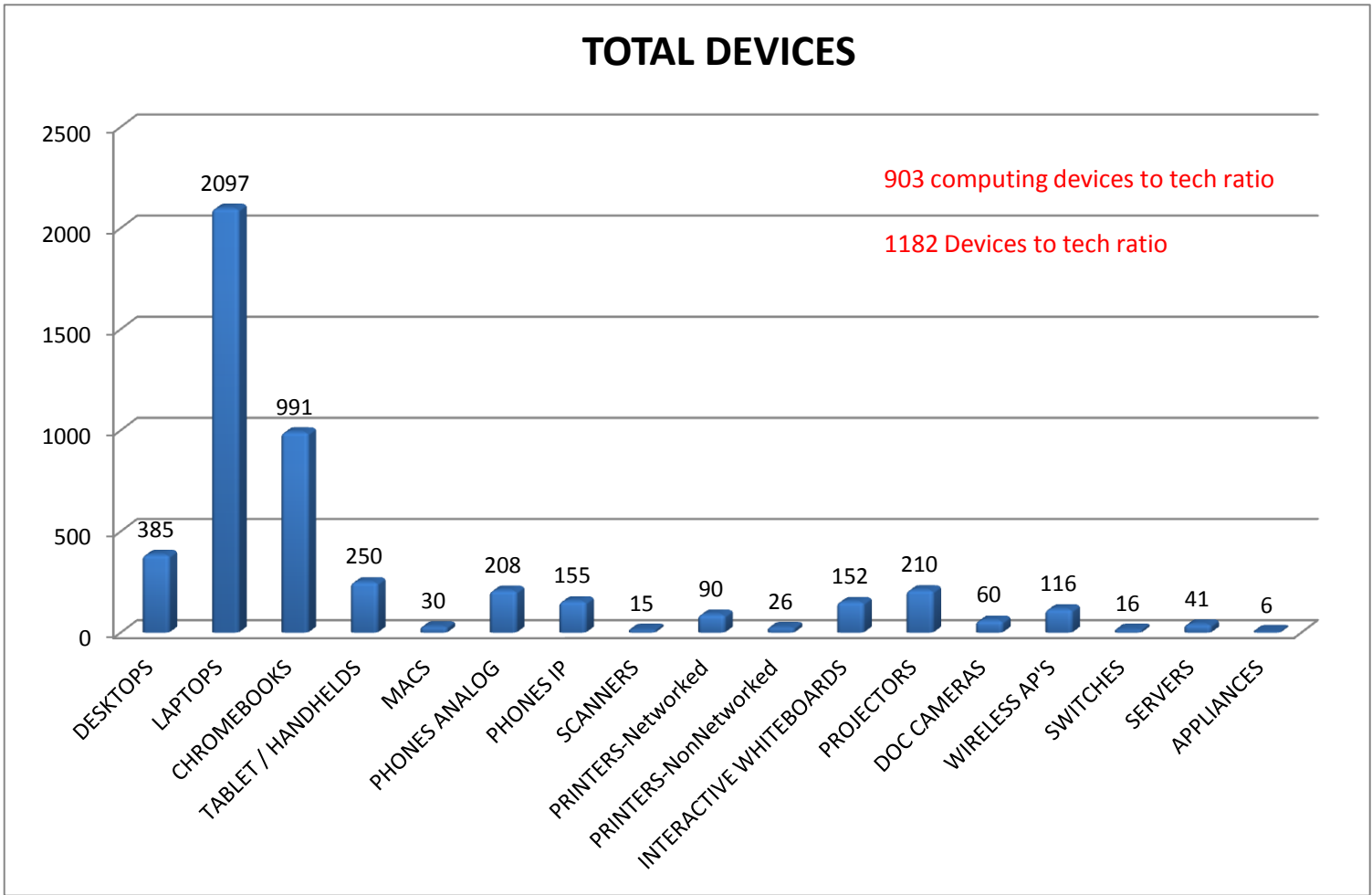


IT HD Request per Month & Year



	05-06	06-07	07-08	08-09	09-10	10-11	11-12	12-13	13-14	14-15	15-16	16-17 YTD
July	10	18	11	27	80	52	80	58	32	30	14	29
August	67	73	150	143	258	177	240	229	139	505	104	192
September	260	215	344	493	632	1046	786	733	554	612	614	529
October	203	145	263	274	361	650	455	487	430	740	405	359
November	186	121	152	202	325	488	405	273	341	502	333	272
December	95	121	92	238	251	326	371	397	235	408	343	243
January	161	185	166	247	469	509	477	402	315	476	419	334
February	120	111	145	176	304	284	408	380	386	509	381	307
March	168	116	110	215	369	552	370	337	442	567	295	379
April	94	125	136	202	231	329	262	330	280	426	379	167
May	129	132	126	213	243	341	315	364	339	488	341	332
June	23	49	94	96	117	109	108	113	123	49	102	

PSD IT Service Level Dashboard



PSD IT Service Level Dashboard

